

BUILD-TO-SUIT HQ OPPORTUNITY @ ON3

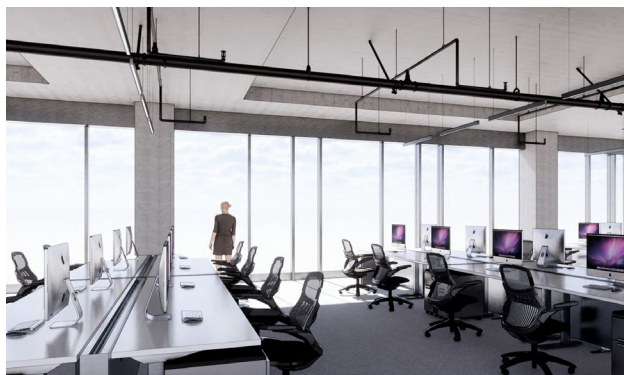


**WORLD-RENOWNED ARCHITECT,
GOETTSCH PARTNERS, HAS
DESIGNED TWO STATE-OF-THE-
ART CLASS A OFFICE
TOWERS TOTALING 400K SF**

**EXCELLENT BRANDING OPPORTUNITY WITH
HIGH VISIBILITY ON RT 3**

**OPEN FLEXIBLE FLOOR PLATES WITH HIGH
CEILINGS AND ABUNDANT NATURAL LIGHT**

**116-ACRE CLASS A MIXED-USE CAMPUS
LOCATED IN NEW JERSEY, 9 MILES FROM
NEW YORK CITY**



ROBERT RUDIN
+1 201-508-5228
robert.rudin@cushwake.com

JOSHUA COHEN
+1 973-292-4618
josh.cohen@cushwake.com

BILL BROWN
+1 973-292-4613
bill.brown@cushwake.com

